
Mobile APP – “LedArt” Operating Instructions

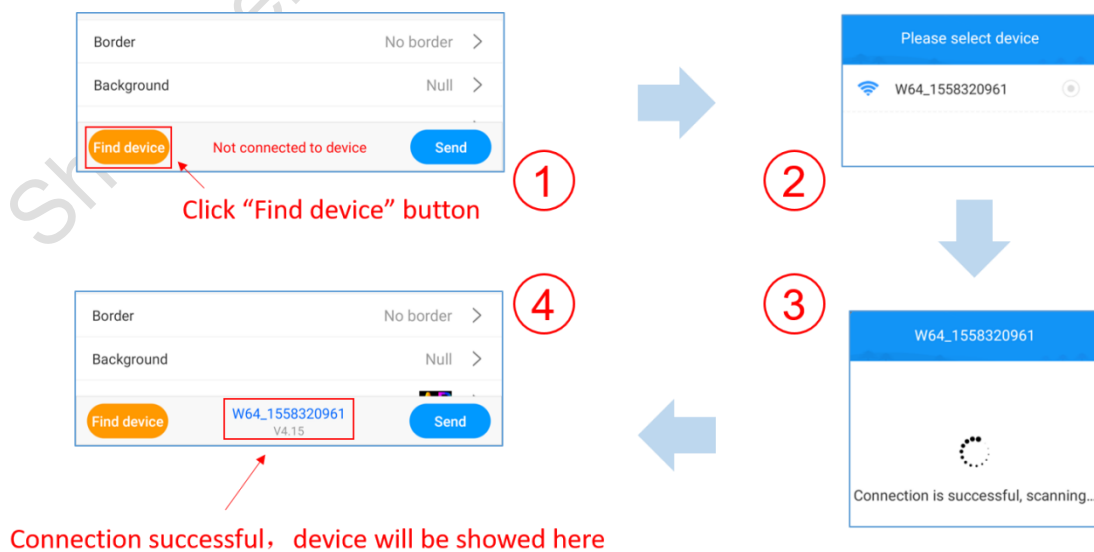
1. Software download

Scanning the QR code downloaded and installed.

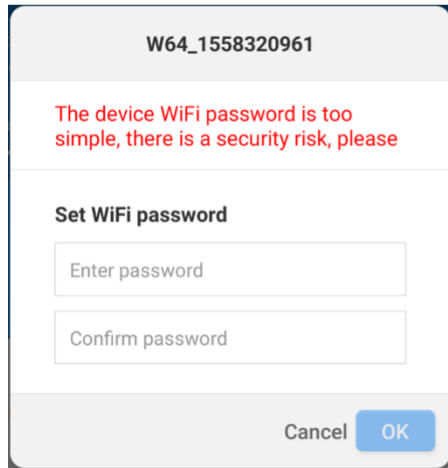


2. Connect the control card and modify the Wi-Fi password

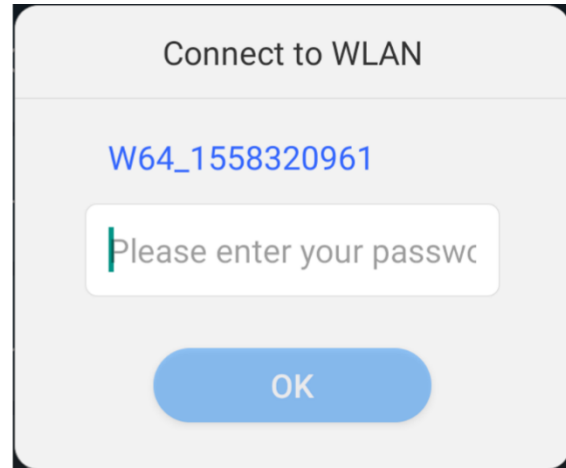
1). Connect the control card: Open the **LedArt** application, click the “Find device” button on the lower right corner, select the Wi-Fi signal connect to the control card (the Wi-Fi default password is 88888888). After the connection is successful, the software interface displays the name of the control card.



2). Change password: The initial password is very simple. For the safety of parameters and programs, According to the software prompt, change the password (8~16-digit combination of letters and numbers) and re-enter the new password and connect.



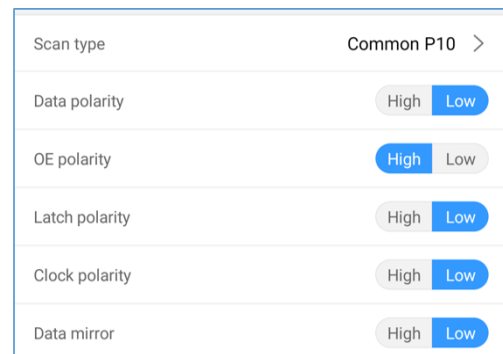
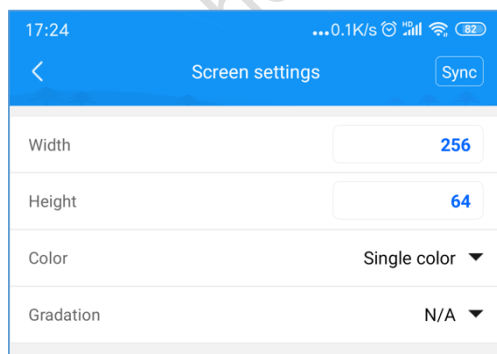
change Password



Enter the password to reconnect

3. Screen Parameters Setting

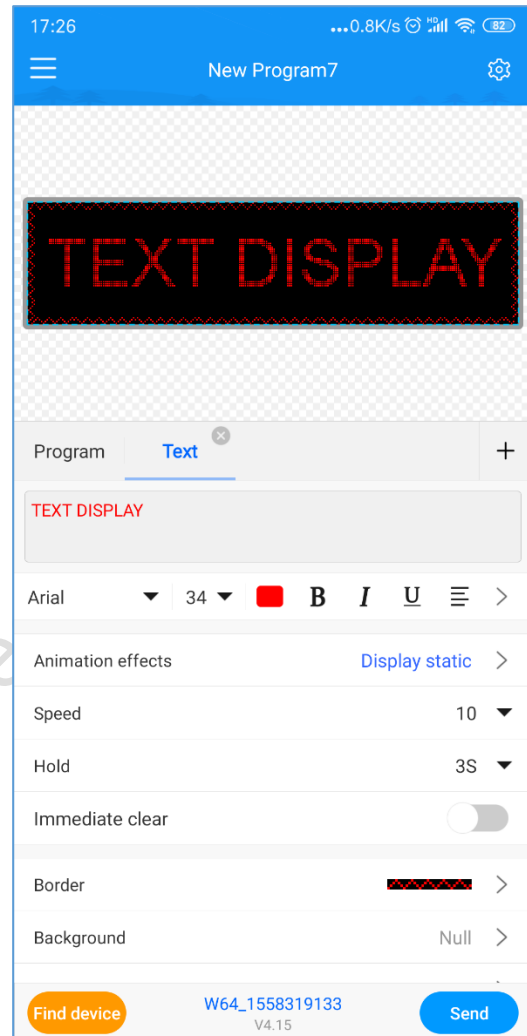
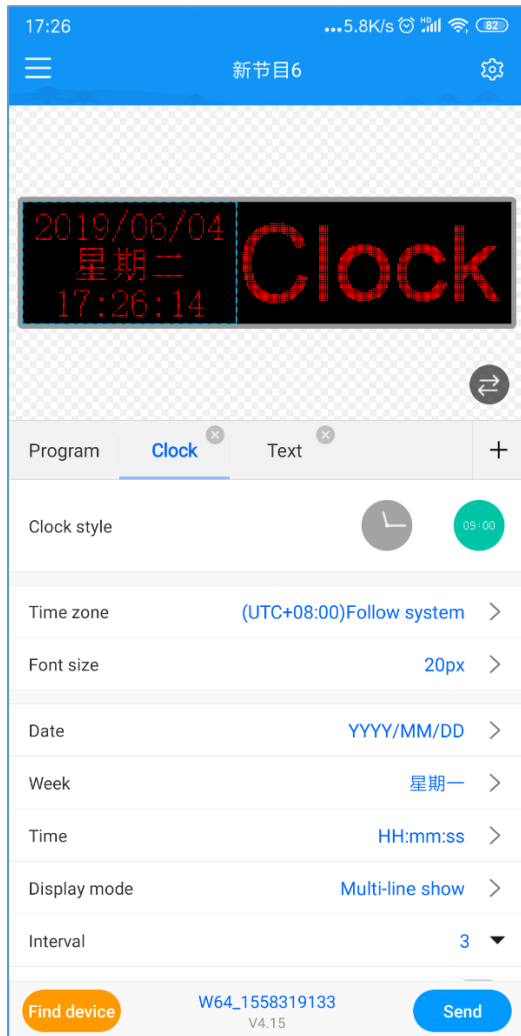
Click the settings icon in the upper right corner, Select [Screen Parameter Settings] and enter the access password (password: 888) to enter the setting interface, after setting the resolution of the display. The default is the normal P10 parameter (P4.75 selects C2, the chip is 16188B). The single module selects C46, and it is necessary to adjust the scanning frequency, clock frequency, polarity setting and other parameters when the display is abnormal.



4. Edit and Send Programs

1. Editing program: Click the “+” icon on the right side of the main interface to add the program content, which is optional for text, picture and clock. In the program editing interface, you can set the style of the text as well as display special effects, clock styles and simple pictures.

Note: one display can only add up to two program areas.



2. Sending programs: After edited, click the “Send” button in the lower right corner of the software to update the programs.


Rotation No rotation ▼

Find device W64_1558320961 Send

V4.15



Send



Sending:10%



Send

Send successfully

Confirm

Shenzhen Huidu Technology