



## High Performance Outdoor Energy Saving LED Display

### Linsn LED-ES1000 Series

The ES1000 series comes in a standard 1000×1000mm cabinet size, with non-standard options of 1000×500mm, 1000×750mm, and 1500×1000mm available for custom screen configurations. Narrow bezels and precise alignment deliver a seamless visual experience across any setup.



ES1000-P3.91/4.8/6.25/7.8/10.4mm

## ES1000 Outdoor LED Display

### Precision Aluminum Construction

The ES1000 Series cabinet uses an aluminum module base and extruded aluminum frame (P4.81 adopts a plastic base), providing outstanding structural stability. This construction reduces deformation and achieves better flatness and tighter seams for a smoother, more uniform screen surface.

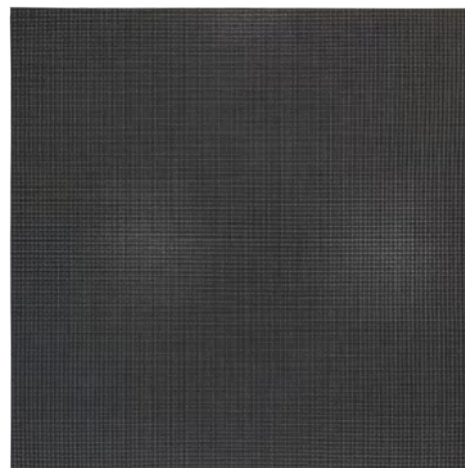


### Safety Harness Design

Each LED module on the ES1000 Series is fitted with a built-in safety harness that secures the module to the cabinet during maintenance or replacement, preventing accidental drops and protecting both personnel and equipment below. The safety harness works alongside the module's built-in handle, making single-person servicing safer and more confident — even at height.

### Dual Service with Front and Rear Maintenance

The ES1000 Series supports both front and rear access for servicing, giving installers and maintenance teams the flexibility to work from either side of the display. Whether wall-mounted or freestanding, modules can be quickly removed and replaced without dismantling the entire structure, reducing downtime and simplifying on-site maintenance.



## Efficient Cooling System

The ES1000 Series combines silent ball-bearing fans, convection ventilation, aluminum fin rear cover, and a textured module base to deliver rapid, multi-layer heat dissipation. The result is a cooler-running display, slower component aging, and a longer product lifespan.

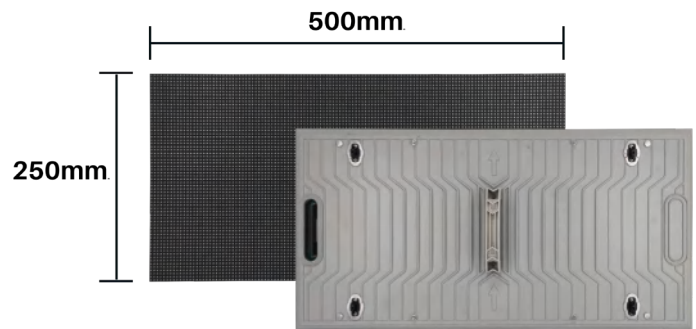


## IP65 Weatherproof Design

The ES1000 series offers IP65-rated protection on both the front and rear, making it suitable for rain, snow, and other harsh outdoor conditions. Power and signal cables are routed internally with weatherproof connectors, keeping the installation clean and water-resistant.

## High-quality LED Module

The ES1000 Series features a 500x250mm modular panel design with a built-in handle for easy handling and installation. The fully sealed, waterproof construction ensures reliable performance in demanding outdoor environments.



High Quality With Global Standards,  
CE EMC, RoHS, FCC Certificated.

## Specification

Pixel Pitch	P3.91mm	P4.8mm	P6.25mm	P7.8mm	P10.4mm
SMD Type	SMD1921	SMD1921	SMD2727	SMD2727	SMD2727
Panel Resolution(dots/pc)	256×256	208×208	160×160	128×128	96×96
Module Resolution	128×64	104×52	80×40	64×32	48×24
Module Dimension	500×250	500×250	500×250	500×250	500×250
Cabinet Size (mm)	1000×1000×87	1000×1000×87	1000×1000×87	1000×1000×87	1000×1000×87
Weight of Cabinet (kg/m <sup>2</sup> )	30.5	30.5	30.5	30.5	30.5
Protective Grade	IP65	IP65	IP65	IP65	IP65
Flatness(mm)	≤0.1	≤0.1	≤0.1	≤0.1	≤0.1
Contrast	4000:1	4000:1	4000:1	4000:1	4000:1
Brightness(nits)	6000	6000	≥6000	≥6000	≥6000
Max. Power Consumption (W/m <sup>2</sup> )	510W	510W	530W	530W	530W
Avg. Power Consumption (W/m <sup>2</sup> )	150-200W	150-200W	150-200W	150-200W	150-200W
Drive Mode	1/8 scale	1/8 scale	1/5 scale	1/4 scale	1/2 scale
Refresh Rate (Hz)	≥3840Hz	≥3840Hz	≥3840Hz	≥3840Hz	≥3840Hz
Color Temperature(K)	8000-10000 optional	8000-10000 optional	8000-10000 optional	8000-10000 optional	8000-10000 optional
Maintenance Mode	Front & Rear	Front & Rear	Front & Rear	Front & Rear	Front & Rear



SHENZHEN LINSN LED CO.,LTD.

Tel: +86-755-32925789 Mobile/Skype/Whatsapp/Wechat: +186-7583-4292

Website: [www.linsnled.com](http://www.linsnled.com)

Address: Building 2, Hongfa High-tech Park, Shiyan Street, Baoan District, Shenzhen, China.